

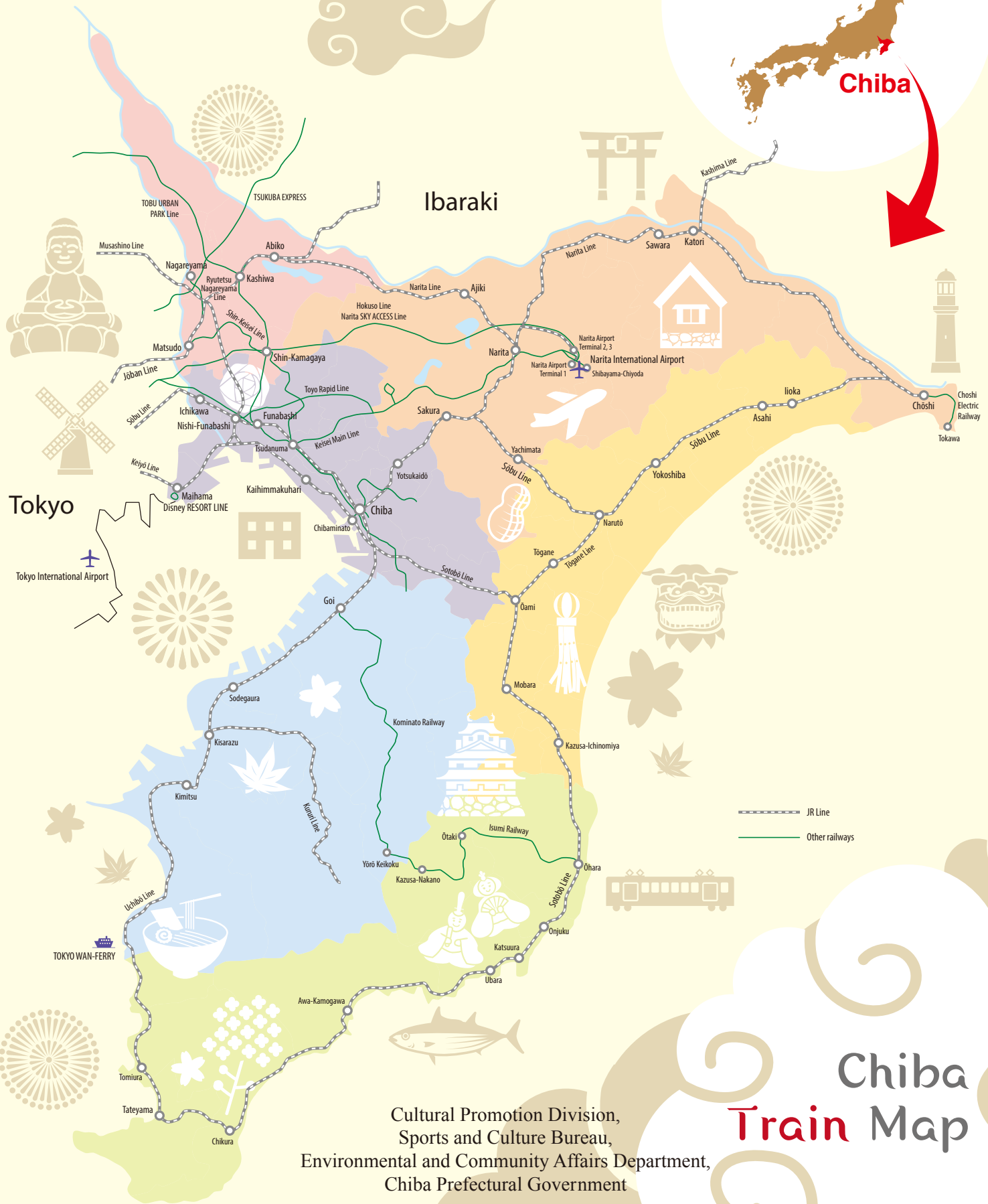


Selected treasures for the future

Chiba Cultural Assets

GUIDE BOOK

JAPAN



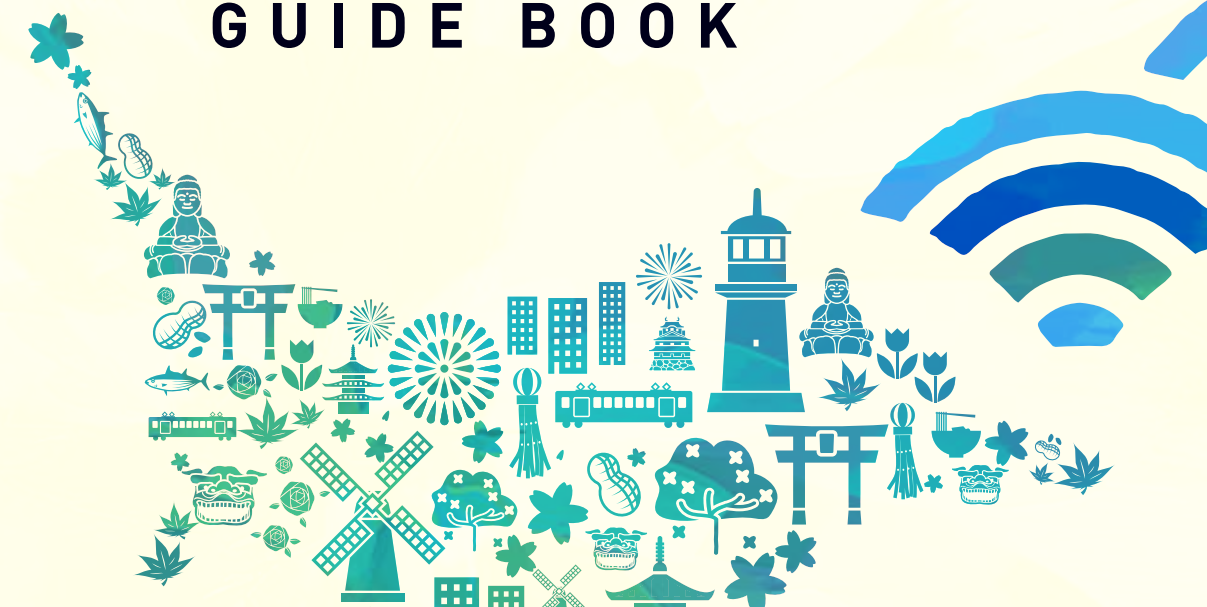
Cultural Promotion Division,
Sports and Culture Bureau,
Environmental and Community Affairs Department,
Chiba Prefectural Government

TEL. 043-223-3945 (Weekdays 9:00 to 17:00)

(Prepared in November 2023)

*The information provided in this pamphlet was current when written, and is subject to change.

Chiba Train Map



The Wonders

of Chiba



Chiba Prefecture Mascot
CHI-BA+KUN

The Wonders of Chiba

Chiba Cultural Assets

Chiba Cultural Assets are "things, activities, and events" that characterize the diverse and rich culture of Chiba," selected from among the cultural assets in the prefecture with the participation of the residents of the prefecture.

The 111 cultural assets were selected on the occasion of the Tokyo 2020 Olympic and Paralympic Games. In 2023, to commemorate the 150th anniversary of the birth of Chiba Prefecture, 39 new cultural assets were additionally selected in cooperation with prefectural residents.






A total of 150 cultural assets, ranging from traditional to new, have been selected.




INDEX

Bay Area	04	Minamiboso Area	20
Higashikatsushika Area	08	Kazusa,Rinkai Area	24
Hokuso Area	10	Chiba Prefecture wide Area	26
Kujukuri Area	16		

Explanation of Chiba Cultural Assets Icons

-  Assets for Enjoying Flowers
 -  Assets for Savoring Cuisine
 -  Newly Registered Assets
-  Address  Admission fee

 Chiba Cultural Assets bearing this mark are cultural assets that tell the story of the culture and traditions of "Japan Heritage: An Edo Travelogue through Four Hokuso Cities."

About "Japan Heritage: An Edo Travelogue through Four Hokuso Cities"

The Agency for Cultural Affairs recognizes stories that tell of the culture and traditions of Japan through the historical charm and characteristics of a region.

In Chiba Prefecture, "An Edo Travelogue through Four Hokuso Cities - Reliving Edo in Hokuso's Historical Districts," featuring the cities of Sakura, Narita, Katori, and Choshi, has been designated as a Japan Heritage Asset.



Bay Area

While the city continues to develop as a futuristic, international business city, it also has the Yatsu-higata, which maintains a rich waterside ecosystem, cultural assets that mark its history from ancient to modern times, and traditional events that remain strong.

Access Information

- Tokyo Station to Chiba Station: approx. 40 min. by rapid train
- Wangan Ichikawa IC to Chiba Station: approx. 18km

01 Chiba Prefectural Cultural Hall

NEW

Since its opening in 1967, the Chiba Prefectural Cultural Hall has been a symbolic theater for culture and the arts in Chiba Prefecture and has received high acclaim for its design and architecture by Masato Otaka, a leading Japanese architect.

- A 11-2 Ichiba-cho, Chuo-ku, Chiba City
- Y Depends on the event



02 Sengen Shrine and Pine Forest in Inage

This shrine has been revered since ancient times for its gods of safe childbirth and child-rearing. The surrounding pine forest is a vestige of when the area was on the seacoast.

- A 1-15-10 Inage, Inage-ku, Chiba City
- Y Free to visit



04 Senryo-ji Temple and Chiba-warai

An ancient temple established by the monk Gyoki in the year 709. On December 31, there is an event called chiba-warai that has continued since the Edo period, where people conceal their faces with masks and shout abuse at each other.

- A 161 Chibadera-cho, Chuo-ku, Chiba City
- Y Free to visit

03 Chiba City's Flower The Oga Lotus

NEW

In 1951, an Oga lotus was discovered in a 2,000-year-old peat layer in Hanamigawa-ku, Chiba City, and it flowered the following year. It is the world's oldest flower and is designated as a natural treasure of Chiba Prefecture.

- A Field Trip: 3-1-1 Bente, Chuo-ku, Chiba City (Chiba Park)/1051 Hatamachi, Hanamigawa-ku, Chiba City (former Tokyo University Landscape Plants Research Center) and others/ Makuhari Seaside Park Mihama-en/ Shirasagi Park/ Tomita Satoniwa Farm
- Y Varies depending on the facility



05 Inohana Castle Site

They say the town of Chiba developed in medieval times after the Chiba clan established its base there. Even today, there are many connections with the Chiba clan in the Inohana Castle Site area.

- A 1-6-1 Inohana, Chuo-ku, Chiba City
- Y Sightseeing is free



06 Chiba Port Tower/ Chiba Port Park and Chiba Prefectural Museum of Art

Enjoy works of art connected with Chiba Prefecture against the backdrop of a lush green park and a splendid view 113 m above the ground. This is a relaxation spot for the people of Chiba and a wellspring of cultural activities.

- [Chiba Port Tower]
 - A In Port Park, 1 Chuoko, Chuo-ku, Chiba City
 - Y Adults ¥420, elementary/junior high school students ¥200
- [Chiba Port Park]
 - A 1 Chuoko, Chuo-ku, Chiba City
 - Y Free
- [Chiba Prefectural Museum of Art]
 - A 1-10-1 Chuoko, Chuo-ku, Chiba City
 - Y Special Exhibitions: General ¥500, high school and university students ¥250
 - *Separate admission fee for special exhibitions



08 Chiba Shrine and The Myoken Taisai Festival

This shrine is consecrated to Myoken-sama, the guardian deity of the Chiba clan. The Myoken Taisai Festival, held from August 16 to 22, has continued without a single interruption since 1127.

- A 1-16-1 Innai, Chuo-ku, Chiba City
- Y Free to visit, prayer fee ¥5,000 and up



Image courtesy of Chiba Municipal Kasori Shell Mounds Museum

10 Kasori Shell Mounds

This is one of the largest shell mound sites in Japan, featuring rare figure-8 mounds. It offers a glimpse into the life of the Jomon people from about 5,000 to 3,000 years ago. In 2017, it became the first shell mound site to be designated as a Special Historic Site.

- A 8-33-1 Sakuragi, Wakaba-ku, Chiba City
- Y Free admission to museum



11 Makuhari-Shintoshin

This neighborhood was launched with the opening of the convention center Makuhari Messe in 1989. It has multiple functions for work, living, learning, and amusement, and aims to be an international strategic center.



12 Urayasu Cultural Property Houses

Cultural property houses in the fishing village of Urayasu. Here you can tour houses preserved in the old city area, as well as a fisherman's house, merchant house, and row house reassembled in the museum. You can compare conditions in earlier times with Japan today.

- A (Former House of Otsuka Family) 3-3-1 Horie, Urayasu City / (Former House of Udagawa Family) 3-4-8 Horie, Urayasu City / (Folk Museum) 1-2-7 Nekozane, Urayasu City
- Y Free



07 Chiba City Museum of Art (formerly the Chiba branch of Kawasaki Bank)

A building in the Neo-Renaissance style constructed in 1928 by the architect Yabe Matakichi as the Chiba branch of the Kawasaki Bank. Preserved as a hall and still in use today.

- A 3-10-8 Chuo, Chuo-ku, Chiba City
- Y Permanent Exhibitions: General ¥300, university students ¥200
- Special Exhibitions: Admission fees vary depending on the exhibition



09 Chiba Oyako Sandai Summer Festival

A midsummer tradition in Chiba City. The highlight of the festival is the Oyako Sandai Chiba Odori (parent-child three-generation dance), where participants dance through the street to the rhythm of drums.

- A 1-12 Chuo, Chuo-ku, Chiba City (Chiba City Chuo Park), etc.
- Y Free



13 Nakayama Hokekyo-ji Temple, Keeper of the Traditions of Nichiren, and the Nakayama/Wakamiya Neighborhoods

Established by Nichiren Daishonin in the Kamakura period, this temple has many extant National Treasures and Important Cultural Properties. The scenery as one approaches the shrine from Shimousa-Nakayama Station is popular for its bustling atmosphere and charm.

[Nakayama Hokekyo-ji Temple]
A 2-10-1 Nakayama, Ichikawa City
Y Free to visit



Ichikawa City



Ichikawa City

14 Katsushika Hachimangu Shrine and Yawata-no-Yabu Shirazu

NEW

Katsushika Hachimangu Shrine was founded based on the division and transfer of the deity from Iwashimizu Hachimangu Shrine in Kyoto during the Kanpyo Era (889-898) at the order of Emperor Uda. The bushes in front of the City Hall are known as "Yawata-no-Yabu Shirazu," meaning that once you set foot in the bushes, you will never get out.

[Katsushika Hachimangu Shrine]
A 4-2-1 Yawata, Ichikawa City
Y Free to visit



Funabashi City

19 Funabashi Daijingu Shrine and Kagura

A shrine listed in the Engishiki, a Japanese book of laws and customs compiled in 927. The shrine's lighthouse is one of the prefecture's Tangible Folk Cultural Properties, and kagura (Shinto music and dancing) is offered six times a year at the shrine's Kagura-den Hall and at the Funabashi Fishing Port.

A 5-2-1 Miyamoto, Funabashi City
Y Free to visit



Narashino City

20 Yatsu-higata

This tidal flat is registered under the Ramsar Convention. It is also one of the leading point of Japan's migratory bird flying sites, where you can encounter a variety of wild birds throughout the four seasons.

[Yatsu-higata Nature Observation Center]
A 5-1-1 Akitsu, Narashino City
Y General ¥380, 65 and over ¥190, Free for junior high school students and under



Ichikawa City

15 Higashiyama Kaii Memorial Hall

This hall was established in 2005 in a locality where the Japanese painter, Higashiyama Kaii, spent most of his life. His world is presented through archival materials and exhibitions of his works.

A 1-16-2 Nakayama, Ichikawa City
Y General ¥520, 65 and over ¥410, high school and university students ¥260
*Separate admission fee for special exhibitions

16 Mikoshi Portable Shrines and Festivals in Gyotoku

NEW

In Gyotoku, temples and shrines were built as the area prospered from salt production and boat transportation industries, and mikoshi portable shrines were made into a local industry, utilizing the skills of shrine carpenters and craftsmen fabricating Shinto and Buddhist altars. Processions of mikoshi portable shrines are still held today as the highlight of the festival.

[Ichikawa City Gyotoku Fureai Denshokan Museum]
A 35-7 Hongyotoku, Ichikawa City (Old Asako Mikoshi Making Shop) /37-13 Hongyotoku, Ichikawa City (Rest Area)
Y Free
[Gyotoku Mikoshi Museum]
A 21-3 Honshio, Ichikawa City
Y Free
*Paid guided tours are also available



Ichikawa City

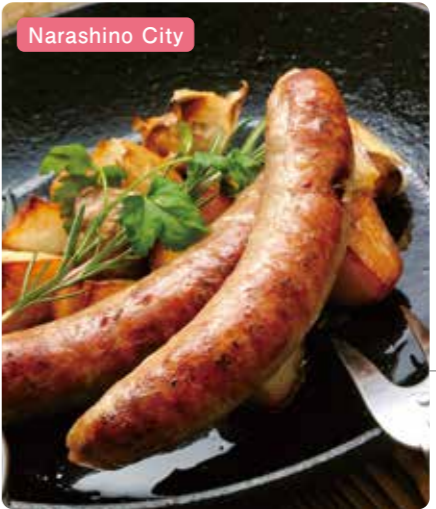


Yotsukaido City

21 Uchikuroda Hadaka Mairi

Held at Uchikuroda Kumano Shrine, this traditional Shinto rite prays for a bountiful harvest and good health. A city-designated cultural property.

A 629 Uchikuroda, Yotsukaido City (Uchikuroda Kumano Shrine)
Y Free



Narashino City

22 Narashino Sausage

NEW

During World War I, the German sausage manufacturing method was introduced to Japan for the first time. Because of this historical fact, Narashino Chamber of Commerce and Industry registered it as a regional collective trademark and commercialized it in the form of a local gourmet product as "the traditional location of inheritance of the sausage manufacturing method in Japan."

A Large stores, supermarkets, restaurants and drinking establishments, butcher shops, etc. in and around Narashino City
Y ¥320 (1 piece pack for retail commercial use). The price of other products may differ depending on the store



Funabashi City

17 Funabashi H.C. Andersen Park

A park comprising five zones where you can experience the world of fairy tales. The park's name derives from the fairy tale author Hans Christian Andersen, born in Odense, Denmark, a sister city of Funabashi City.

A 525 Kanehori-cho, Funabashi City
Y General ¥900, high school students (must present student ID) ¥600, elementary/junior high school students ¥200, small children (4 and over) ¥100
*For details please see the website



Funabashi City

18 Nakayama Racecourse

A horse racing track managed by the Japan Racing Association. Many races are held here, including the prestigious Arima Kinen. There is also a wide range of playground equipment for children to enjoy.

A 1-1-1 Kosaku, Funabashi City
Y For horse race ¥200, free when there are no races but open for purchasing betting tickets for horse races at other courses



Yachiyo City

23 Keisei Rose Garden

This rose garden has received the Award of Garden Excellence from the World Rose Convention. On grounds covering 30,000 m², you can enjoy 10,000 rose plants in 1,600 varieties ranging in era from the original to the latest cultivars. The best time to view the garden is from early to mid-May to early to mid-June and from mid-October to late November.

A 755 Owada Shinden, Yachiyo City
Y high school students and over ¥500 - ¥1,800, Visitors with disabilities ¥500 - ¥1,500, Elementary/junior high school students ¥200 - ¥500, Free admission for pre-school aged children
*Middle school aged children and younger must be accompanied by guardian
*Changes depending on the season
*Additional fees for night events and strawberry picking events
*For information on other months please see the website



Chiba City, Funabashi City, Narashino City, Yachiyo City

24 Shimousamiyama no Shichinen Matsuri (Seven Year Festival)

A collaborative festival representing Shimousa in which nine shrines join together from the four cities of Chiba, Funabashi, Narashino, and Yachiyo. It is held at six-year intervals (seven years in East Asian calendars) in the year of the Ox and the year of the Sheep.

A 5-20-1 Miyama, Funabashi City (Ninomiya Shrine), etc.
Y Free

* Information on the facilities listed may be subject to change without notice. Please be sure to check before visiting.